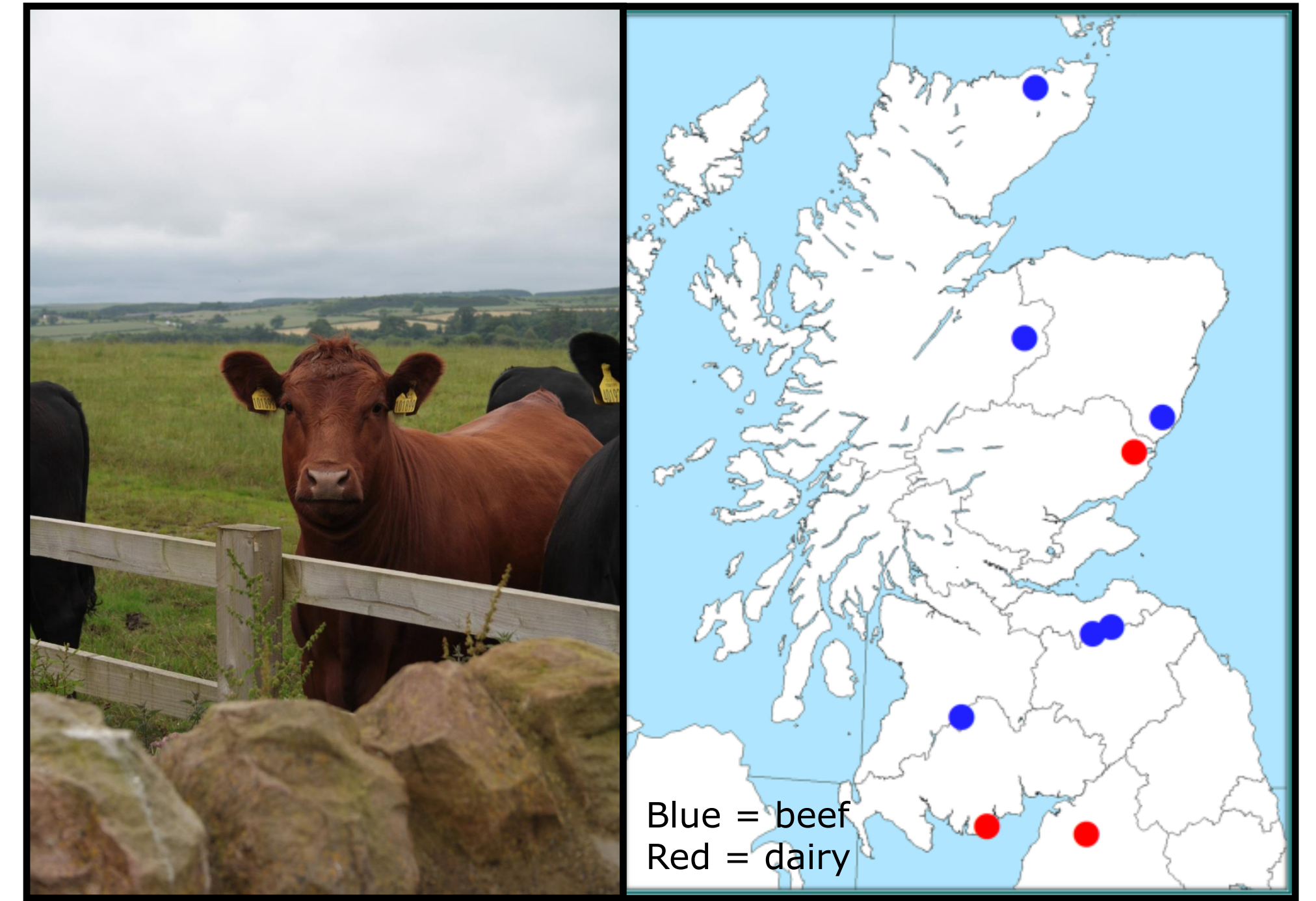


Beef Farm 4 is part of an estate and has a 300 head spring calving herd with a flock of 2500 ewes.

They produce Charolais stores, but would like to be able to sell surplus heifers for breeding as well.

This is currently not feasible because they need all their home-bred heifers for replacements.



Holding pens

Calving pens

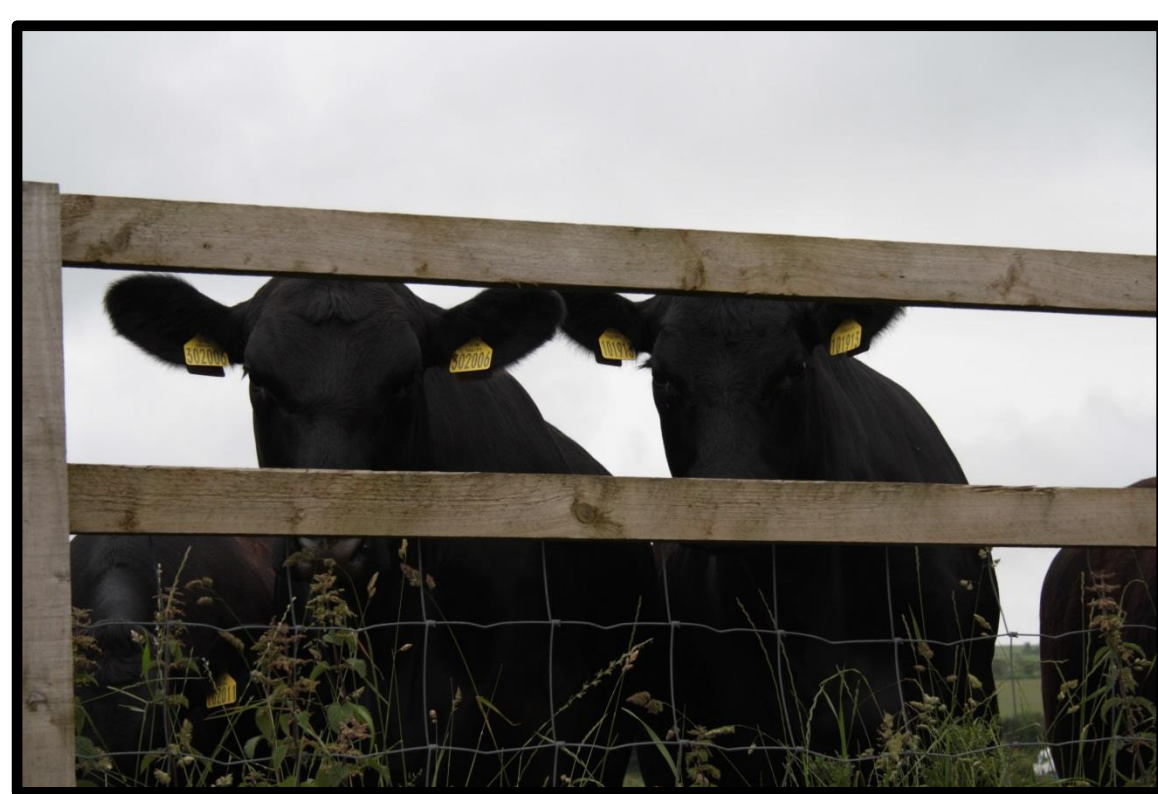
The cows calve indoors for management purposes, with the pen set up being ideal for this.

Cows move quickly through the pens, going out to the fields after four or five days.



Bull and isolation pens

Replacement heifers

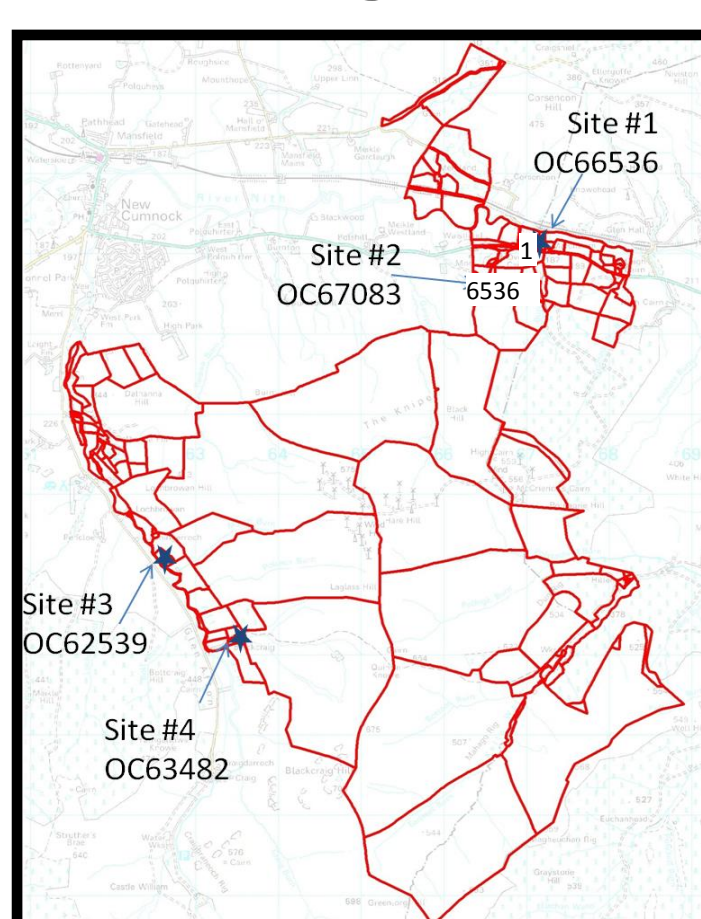


The Estate has a second farm where ELISA positive cows calve and some of the herd run with the bull.

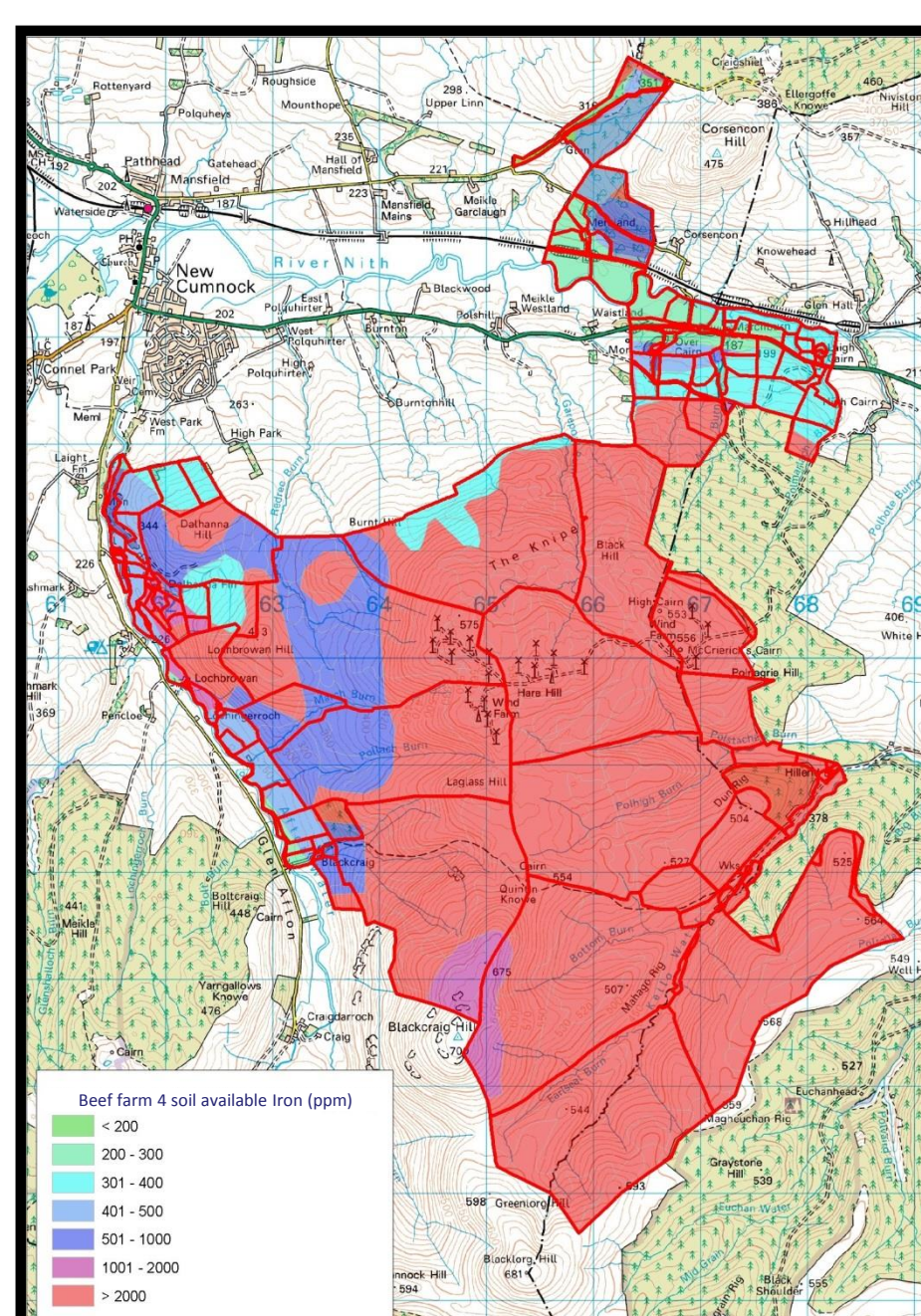
Environmental factors

Evidence suggests that soil environmental factors play a role in the persistence of *Mycobacterium avium paratuberculosis* (MAP).

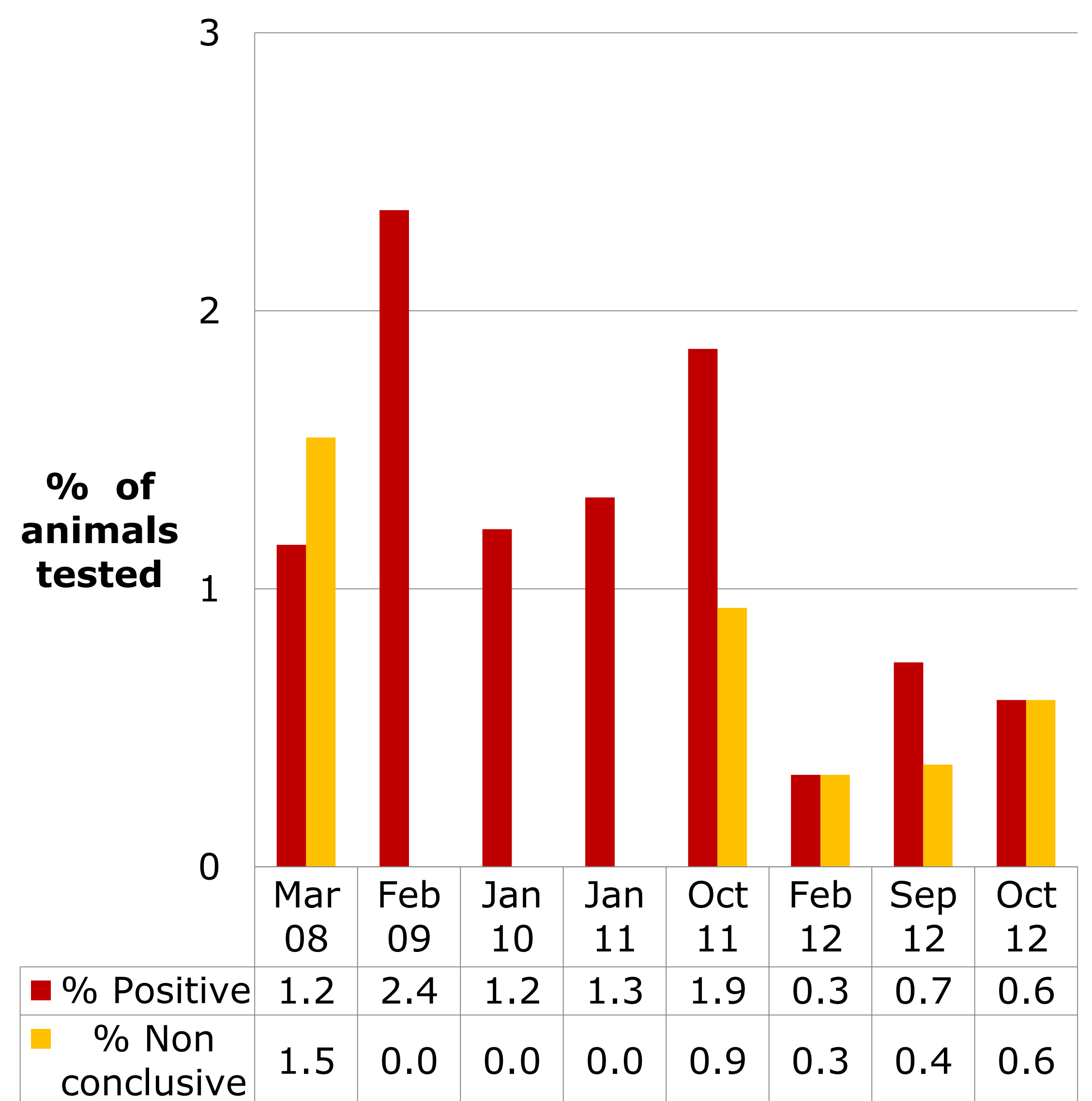
Sample sites were selected according to soil parameters and farming activity.



Indications of MAP specific DNA was only found at site 1, but more testing is required to confirm the presence of MAP DNA here.



Johne's on Beef Farm 4



Beef Farm 4 has been testing since 2007 as part of the PCHS.

Their first case was in 2005.

At the last three herd tests they have had one serum positive animal.

ELISA positive cows are isolated from the rest of the herd before culling. Their calves are not kept as replacements.

Post-mortem samples

		Histopathology			
		+	?	-	Total
Serum ELISA	+	1	1	4	6
	?	0	0	0	0
	-	0	0	12	12
	Total	1	1	16	18

In the animals sampled so far we have found evidence to suggest that MAP is still present on the farm, though at a low level.

With thanks to the farm for the farm photographs and Richard Irvine and Cathy Lamm of Glasgow for the post-mortem pictures.

We would like to thank the Scottish Funding Council for funding the PARABAN project.